

**Minera Yanacocha S.R.L. / Newmont Mining Corporation  
Carbon Plant Relocation**

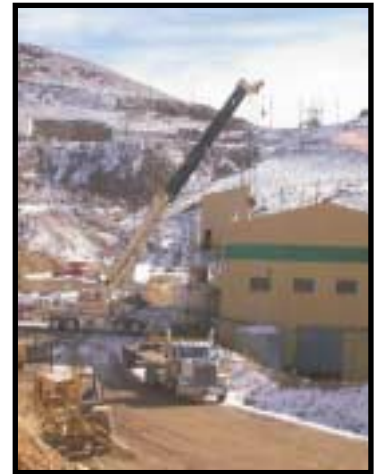
Merit tendered the work, managed the dismantling, and directed and supervised the repairs of the Newmont Mining Carbon Plant facilities at the Battle Mountain Gold and Carlin Gold Quarry Plants in Nevada for transportation and re-erection at the Yanacocha Property in Peru. The work was completed within the time and costs estimated by Merit. Merit helped



to develop the overall project schedule, identified appropriate used facilities, and aggressively targeted the dismantling of the plants to improve on the original schedule. All shipment paperwork, inspection and packaging was performed by Merit personnel in conjunction with the transportation contractor.

Currently, shipments to Lima are on schedule and Merit will manage the installation of the complete plant commencing in April 2001 with another aggressive schedule and a completion date of October 1<sup>st</sup> 2001.

Merit is very pleased to have this opportunity to work so closely with Minera Yanacocha / Newmont and its' associated companies on this important project.



**Corriente Resources Inc.  
Scoping Document  
Corriente Copper Belt Project - Ecuador**

Merit has been fortunate to have been invited to participate in the recently completed Order-of-Magnitude Study for the Corriente Copper Belt Project in Ecuador. Working with a number of consultants, the group assembled a document containing all of the elements required to consider the future development of this copper prospect commencing with a 50,000 tpd grinding and flotation facility, with an ultimate capacity of 150,000 tpd.

